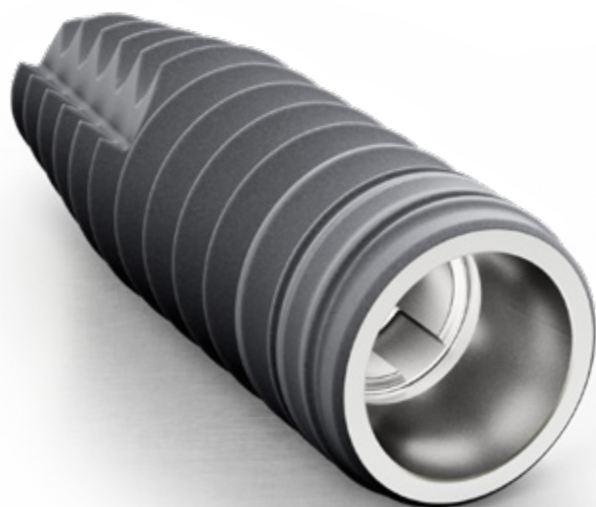



# PROGRESSIVE-LINE




# PROGRESSIVE-LINE

## Implants with snap-in insertion posts

|   | Article   | Art. No.   | Ø      | L      | A Ø    |        |
|---|---|------------|--------|--------|--------|--------|
|  | <b>CONELOG® PROGRESSIVE-LINE Implant, Promote® plus</b><br>incl. snap-in insertion post and cover screw, sterile<br><br><b>Material</b><br>Titanium Grade 4 | C1086.3309 | 3.3 mm | 9 mm   | 2.2 mm |        |
|   |   | C1086.3311 |        | 11 mm  |        |        |
|   |   | C1086.3313 |        | 13 mm  |        |        |
|   |   | C1086.3316 |        | 16 mm  |        |        |
|   |   | C1086.3807 | 3.8 mm | 7 mm   | 3.0 mm |        |
|   |   | C1086.3809 |        | 9 mm   |        |        |
|   |   | C1086.3811 |        | 11 mm  |        |        |
|   |   | C1086.3813 |        | 13 mm  |        |        |
|   |   | C1086.3816 | 16 mm  | 2.7 mm |        |        |
|   |   | C1086.4307 | 4.3 mm |        | 7 mm   | 3.0 mm |
|   |   | C1086.4309 |        |        | 9 mm   |        |
|   |   | C1086.4311 |        |        | 11 mm  |        |
|   |   | C1086.4313 |        | 13 mm  |        |        |
|   |   | C1086.4316 | 16 mm  | 2.7 mm |        |        |
|   |   | C1086.5007 | 5.0 mm |        | 7 mm   | 3.5 mm |
|   |   | C1086.5009 |        |        | 9 mm   |        |
|   |   | C1086.5011 |        |        | 11 mm  |        |
|   |   | C1086.5013 |        | 13 mm  |        |        |
| C1086.5016  | 16 mm   | 3.2 mm     |        |        |        |        |

Surgery

## Implants with screw-mounted insertion posts

|   | Article   | Art. No.   | Ø      | L      | A Ø    |        |
|---|---|------------|--------|--------|--------|--------|
|  | <b>CONELOG® PROGRESSIVE-LINE Implant, Promote® plus</b><br>incl. screw-mounted insertion post and cover screw, sterile<br><br><b>Material</b><br>Titanium Grade 4 | C1085.3309 | 3.3 mm | 9 mm   | 2.2 mm |        |
|   |   | C1085.3311 |        | 11 mm  |        |        |
|   |   | C1085.3313 |        | 13 mm  |        |        |
|   |   | C1085.3316 |        | 16 mm  |        |        |
|   |   | C1085.3807 | 3.8 mm | 7 mm   | 3.0 mm |        |
|   |   | C1085.3809 |        | 9 mm   |        |        |
|   |   | C1085.3811 |        | 11 mm  |        |        |
|   |   | C1085.3813 |        | 13 mm  |        |        |
|   |   | C1085.3816 | 16 mm  | 2.7 mm |        |        |
|   |   | C1085.4307 | 4.3 mm |        | 7 mm   | 3.0 mm |
|   |   | C1085.4309 |        |        | 9 mm   |        |
|   |   | C1085.4311 |        |        | 11 mm  |        |
|   |   | C1085.4313 |        | 13 mm  |        |        |
|   |   | C1085.4316 | 16 mm  | 2.7 mm |        |        |
|   |   | C1085.5007 | 5.0 mm |        | 7 mm   | 3.5 mm |
|   |   | C1085.5009 |        |        | 9 mm   |        |
|   |   | C1085.5011 |        |        | 11 mm  |        |
|   |   | C1085.5013 |        | 13 mm  |        |        |
| C1085.5016  | 16 mm   | 3.2 mm     |        |        |        |        |

**Note**  
 Implants with the screw-mounted insertion post (Art. No. C1085.xxxx) are to be used for template-guided implant insertion with the PROGRESSIVE-LINE Guide System.